

Nativity of Our Lord - Mass at Midnight

Introit

Intr.

2.

D



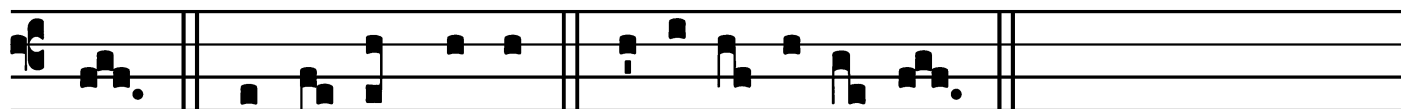
O-mi- nus * dí- xit ad me : Fí- li- us mé- us



es tu, é- go hó- di- e gé- nu- i te. *Ps. Quare*



fremu- é- runt géntes : * et pópu- li medi- tá- ti sunt in- áni-



a? Gló- ri- a Pátri. E u o u a e.

Nativity of Our Lord - Mass at Midnight

Gradual

(Page 1 of 2)

Grad.

2.

T

Ecum princí-pi- um * in dí- e vir-

tú- tis tú- æ : in splendó- ri-

bus sanctó- rum, ex ú- te- ro ante

lu-cí- ferum gé- nu- i te.

∇. Dí-xit Dóminus Dómino

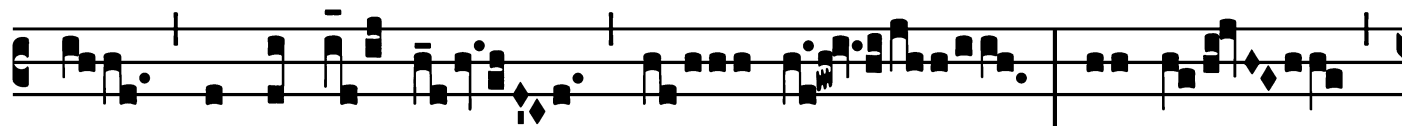
mé- o : Sé-

de a dextris mé- is : do-nec pó-

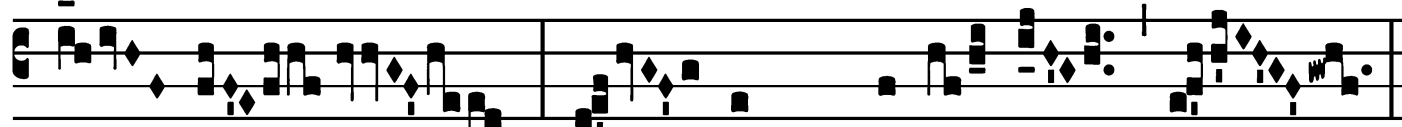
Nativity of Our Lord - Mass at Midnight

Gradual

(Page 2 of 2)



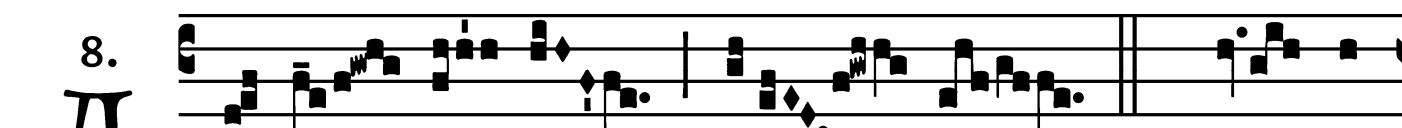
nam in-imí- cos tú- os, sca-bél-



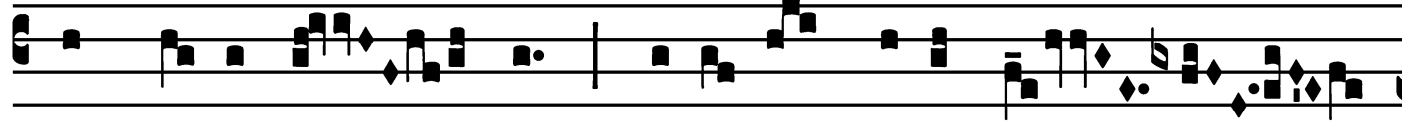
lum pé- dum * tu-ó- rum.

Alleluia

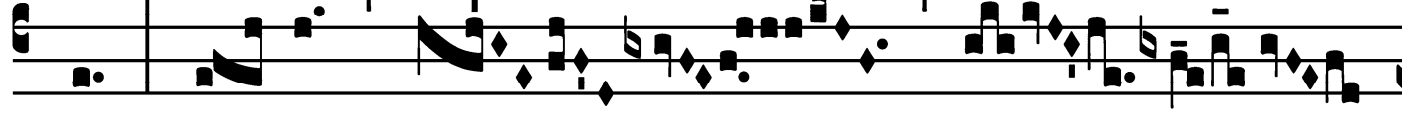
8. **A**



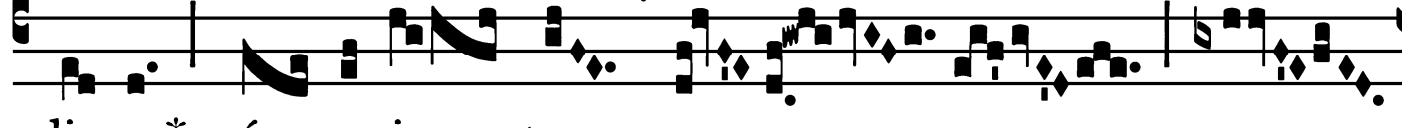
L-le- lú- ia. * *ij.* Ψ . Dó- mi-



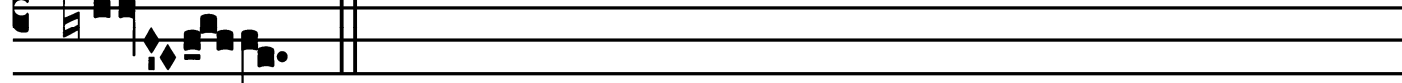
nus dí-xit ad me : Fí-li- us mé-us es



tu, é- go hó-



di- e * gé- nu- i te.



Nativity of Our Lord - Mass at Midnight

Offertory

Offert. 4.

L Æténtur * cœ- li, et exsúl- tet tér-
ra an- te fá- ci- em DÓ- mi- ni : quó- ni- am
vé- nit.

Nativity of Our Lord - Mass at Midnight

Communion

Comm. 6.

N splendó-ribus * sanctó- rum, ex ú-te- ro

ante lu-cí-ferum gé-nu- i te.