

# Aleluja

## Svetkovina Svih Svetih

za troglasni mješoviti zbor, soliste i orgulje

T. Prša, prema  
Al. Venite ad me,  
GT 619

### Orguljaški uvod

**Con moto**

**f**

7 Solo A/Svi

*attacca*



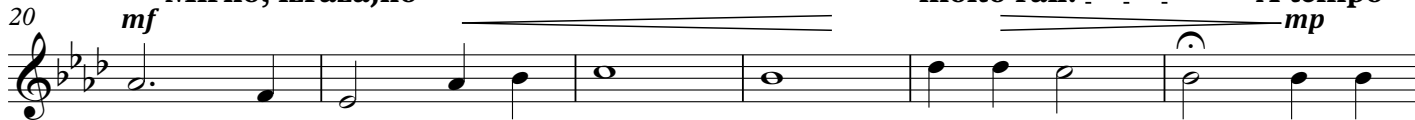
A - le - lu - ja, a - le - lu - ja, a - le - lu - ja.

### Solo T

**Mirno, izražajno**

**molto rall.**

**A tempo**



Do - di - te k me - ni svi vi iz - mo - re - ni i op -



te - re - će - ni i ja ću vas od mo - ri - ti,

### Troglasno: SABar

**Moderato**

**mf**

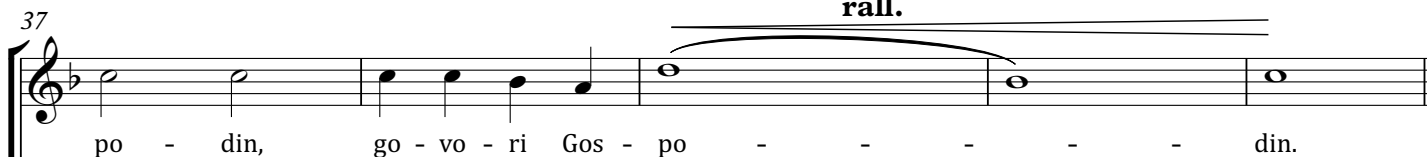


go - vo - ri Gos - po - din, go - vo - ri Gos - po - din, go - vo - ri Gos -

go - vo - ri Gos - po - din, go - vo - ri Gos - po - din,

go - vo - ri Gos - po - din, go - vo - ri Gos -

**rall.**



po - din, go - vo - ri Gos - po - - - - - din.

go - vo - ri Gos - po - din, go - vo - ri Gos - po - - - - - din.

po - din, go - vo - ri Gos - spo - - - - - din.

### Mediugra

**f**

50 Svi



A - le - lu - ja, a - le - lu - ja, a - le - lu - ja.

# Aleluja

Svetkovina Svih Svetih

za troglasni mješoviti zbor, soliste i orgulje

T. Prša, prema  
Al. Venite ad me,  
GT 619

Uvod

Con moto

Org. *ff*

5

*ped.*

Solo A

7 *f* 10 *attacca*

A - le - lu - ja, a - le - lu - ja, a - le - lu - ja.

*p*

*man.*

Svi

13 *f* 15

A - le - lu - ja, a - le - lu - ja, a - le - lu - ja.

*f*

Solo T **Mirno, izražajno** *mf* **molto rall.** **A tempo** *mp*

20 25

Do - di - te k me-ni svi vi iz - mo - re - ni i op -

Gamba 8'

Detailed description: This block contains the first system of the musical score. It features a vocal line for Solo T and a Gamba 8' accompaniment. The vocal line starts at measure 20 and ends at measure 25. The tempo markings are 'Mirno, izražajno' (Moderato), 'molto rall.' (Ritardando), and 'A tempo'. The dynamic markings are 'mf' (mezzo-forte) and 'mp' (mezzo-piano). The key signature has three flats (B-flat, E-flat, A-flat) and the time signature is 4/4. The vocal line has a fermata over the final note of the first phrase and another over the final note of the second phrase. The Gamba 8' accompaniment consists of chords and single notes in both hands.

*mp* **rall.** 30 *attacca*

te - re - će - ni i ja ću vas od mo - ri - ti,

Detailed description: This block contains the second system of the musical score. It continues the vocal line and the Gamba 8' accompaniment. The vocal line starts at measure 30 and ends at measure 35. The tempo markings are 'mp' (mezzo-piano), 'rall.' (Ritardando), and 'attacca'. The dynamic markings are 'mp' and 'attacca'. The key signature remains three flats and the time signature is 4/4. The vocal line has a fermata over the final note of the first phrase and another over the final note of the second phrase. The Gamba 8' accompaniment continues with chords and single notes in both hands.

Troglasno: SABar

**Moderato** *mf* 35

go - vo - ri Gos - po - din, go - vo - ri Gos - po - din, go - vo - ri Gos -

go - vo - ri Gos - po - din, go - vo - ri Gos - po - din,

go - vo - ri Gos - po - din, go - vo - ri Gos -

**Moderato**

Flauta 8' i 4'

Detailed description: This block contains the third system of the musical score. It features a Troglasno: SABar vocal line and a Flauta 8' i 4' accompaniment. The vocal line starts at measure 35 and ends at measure 40. The tempo marking is 'Moderato'. The dynamic marking is 'mf' (mezzo-forte). The key signature has three flats and the time signature is 4/4. The vocal line has a fermata over the final note of the first phrase and another over the final note of the second phrase. The Flauta 8' i 4' accompaniment consists of chords and single notes in both hands.

**rall.** 40

po - din, go - vo - ri Gos - po - - - - - din.  
 go - vo - ri Gos - po - din, go - vo - ri Gos - po - - - - - din.  
 po - din, go - vo - ri Gos - spo - - - - - din.

**rall.**

Mediugra

*ff* 45

Svi

50 *f* 55

A - le - lu - ja, a - le - lu - ja, a - le - lu - ja.