

O križu blagoslovljeni

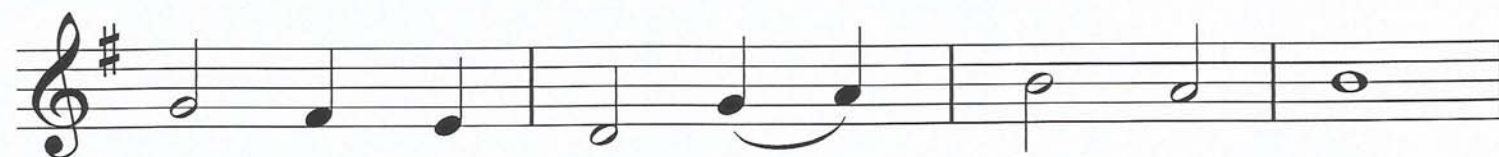
Napjev: Stjepan Hadrović,
"Crkvena pjesmarica Hosanna", 1911.



1. O kri - žu bla - go - slov - lje - ni,
2. Na kri - žu Spas naš, uz - dig - nut,
3. Ti sna - gom kri - ža kr - va - vog
4. Sva sla - va Te - bi, I - su - se,



1. svem svije - tu ti si u - fa - nje!
2. sve lju - de k se - bi pri - vla - či,
3. sav dug nam, Kris - te, ot - pu - sti,
4. sa O - cem, Du - hom Pre - sve - tim:



1. Ti, ne - koć dr - vo sra - mot - no,
2. a đ a - vo skr - šen, bez plije - na,
3. i rop - stvo sta - ro do - kon - ča,
4. u - dije - li nam u vječ - nost svu



1. a sa - da vra - ta ne - be - ska!
2. po - bije - den, e - to, od - la - zi.
3. slo - bo - dom lju - de ob - da - ri.
4. u - ži - vat kri - ža plo - do - ve.

O križu blagoslovljeni

Napjev: Stjepan Hadrović,
"Crkvena pjesmarica Hosanna", 1911.

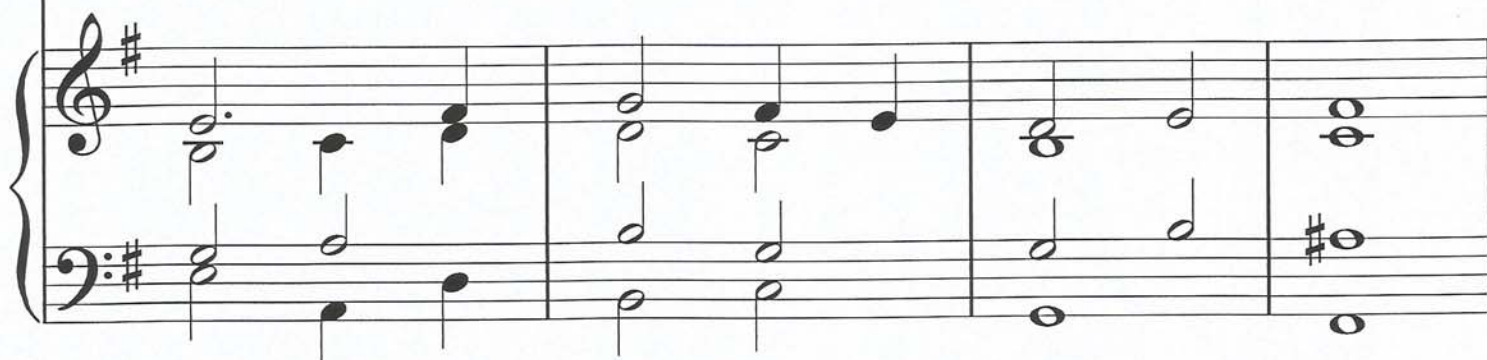


Piano accompaniment for the first system, featuring a treble and bass clef with a key signature of one sharp (F#) and a common time signature (C). The music consists of a series of chords and single notes, primarily in the bass register.



Vocal line for the first system, starting with a treble clef, a key signature of one sharp (F#), and a common time signature (C). The melody is simple and consists of a series of quarter and half notes.

1. O kri - žu bla - go - slov - lje - ni,
2. Na kri - žu Spas naš, uz - dig - nut,
3. Ti sna - gom kri - ža kr - va - vog
4. Sva sla - va Te - bi, I - su - se,



Piano accompaniment for the second system, continuing the harmonic support for the vocal line. It features a treble and bass clef with a key signature of one sharp (F#) and a common time signature (C).



Vocal line for the second system, continuing the melody from the first system. It features a treble clef, a key signature of one sharp (F#), and a common time signature (C).

1. svem svije - tu ti si u - fa - nje!
2. sve lju - de k se - bi pri - vla - či,
3. sav dug nam, Kris - te, ot - pu - sti,
4. sa O - cem, Du - hom Pre - sve - tim:



Piano accompaniment for the third system, concluding the piece. It features a treble and bass clef with a key signature of one sharp (F#) and a common time signature (C).

1. Ti, ne - koć dr - vo sra - mot - no,
 2. a đa - vo skr - šen, bez plije - na,
 3. i rop - stvo sta - ro do - kon - ča,
 4. u - dije - li nam u vječ - nost svu

1. a sa - da vra - ta ne - be - ska!
 2. po - bije - đen, e - to, od - la - zi.
 3. slo - bo - dom lju - de ob - da - ri.
 4. u - ži - vat kri - ža plo - do - ve.