

# BOŽIĆNA MISA

## Gospodine

Š. Marović (2002.)

Moderato ♩=86

Musical score for the 'Gospodine' section. It consists of three staves of music. The first staff begins with a 4/4 time signature, followed by a 6/4 time signature, and then returns to 4/4. The second staff starts with a 6/4 time signature, followed by a 4/4 time signature, and ends with a 6/4 time signature. The third staff starts with a 4/4 time signature, followed by a 6/4 time signature, and ends with a 4/4 time signature. The lyrics are: *f* Go-spo-di- ne\_\_ smi-luj se, \_\_ *mf* Go-spo-di- ne\_\_ smi-luj se. *p* Kri - ste, Kri - ste, *mf* Kri - ste\_\_ smi-luj se. *f* Go-spo-di- ne\_\_ smi-luj se, \_\_ *mf* Go-spo-di ne\_\_ smi-luj se. The score includes dynamic markings (*f*, *mf*, *p*) and a 'rit.' marking at the end of the third staff.

Maestoso ♩=105

## Slava

Musical score for the 'Slava' section. It begins with a 3/4 time signature and features two measures of a whole note, each marked with a '3' above it. The lyrics are: *f* Sla - va Bo - gu na vi - si - ni. I na zem - lji mir\_\_ lju - di-ma, *mf* do - bre vo - lje, do-bre vo - lje. The score includes dynamic markings (*f*, *mf*) and a 'rit.' marking above the final measure. The section concludes with a 'Solo' marking and a melodic line with the lyrics: Hva-li-mo te. Bla - go-sliv-lja-mo te. Kla-nja - mo ti se. Sla-vi-mo te. \_\_ Za



hva-lju - je - mo ti ra - di ve - li - ke sla - ve\_\_ tvo - je.

**Maestoso** ♩=105



*f* Sla - va Bo - gu na vi - si - ni. I na zem - lji



mir\_\_ lju - di - ma, *mf* do - bre vo - lje, do - bre vo - lje.

Solo



Go - spo - di - ne Bo - že, Kra - lju ne - bes - ki, Bo že O - če sve - mo - gu - ci. Go



spo - di - ne Si - ne je - di - no - ro - đe - ni I - su - se Kri - ste. Go -

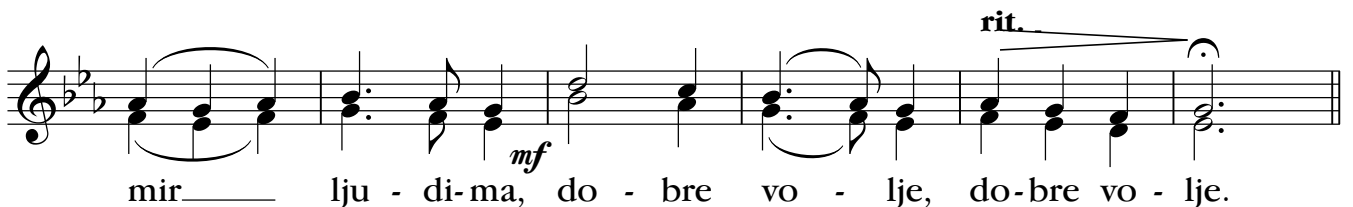


spo - di - ne Bo - že, Ja - ganj - če Bo - žji Si - ne O - čev.

**Maestoso** ♩=105



*f* Sla - va Bo - gu na vi - si - ni. I na zem - lji



mir\_\_ lju - di - ma, *mf* do - bre vo - lje, do - bre vo - lje.

**Moderato** ♩=84



Ko - ji o - du - zi - maš grije - he svi - je - ta, smi - luj nam\_\_ se.

Solo

Ko - ji o - du - zi - maš grije - he svije - ta pri - mi na - šu mo - lit -

Soprani-altovi rit. .

vu. Ko - ji sje - diš s de - sne O - cu smi - luj nam — se.

**Maestoso** ♩=105

Svi

*f* Sla - va Bo - gu na vi - si - ni. I na zem - lji

mir — lju - di - ma, *mf* do - bre vo - lje, do - bre vo - lje. rit. .

Solo

Jer ti si je - di - ni svet. Ti si je - di - ni Go - spo - din. Ti si je - di - ni Sve - viš - nji,

I - su - se Kri - ste. Sa Sve - tim Du - hom u sla - vi Bo - ga O - ca. A - men.

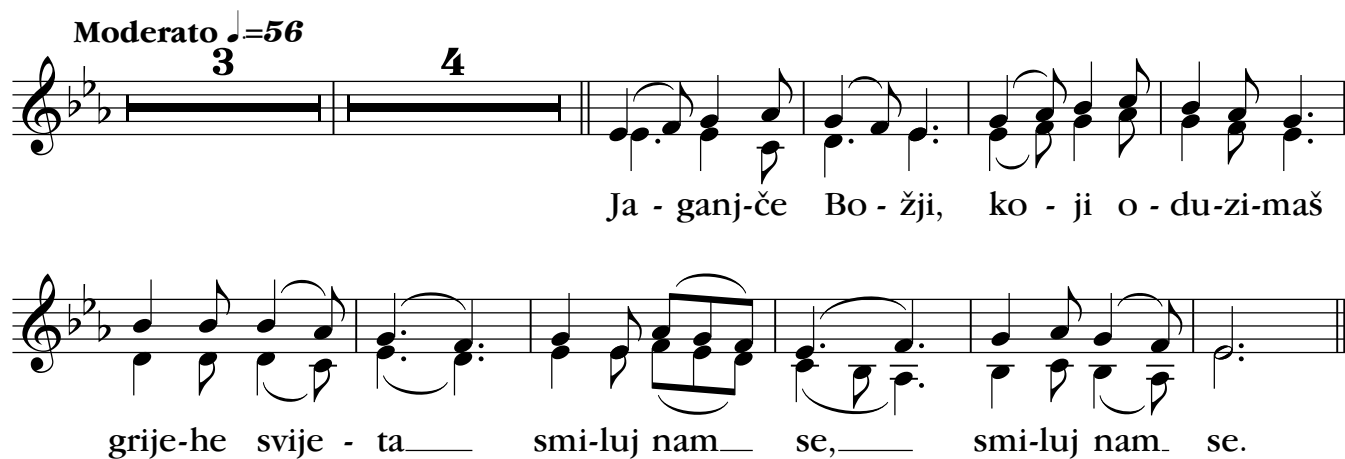
**Allegro** ♩=110

A - men, a - men, a - men, a - men, a - men, a - men. rit. .



# Jaganjče Božji

**Moderato** ♩=56



Ja - ganj-če Bo - žji, ko - ji o - du - zi - maš  
grije - he svije - ta smi - luj nam se, smi - luj nam se.

**Maestoso** ♩=72



Ja - ganj-če Bo - žji ko - ji o - du - zi - maš grije - he svije -  
ta, smi luj nam se, smi - luj nam se, smi - luj nam se. rit. - - - - -  
svije ta, smi - luj nam se, smi luj, smi - luj nam se.

**Moderato** ♩=56



Ja - ganj-če Bo - žji, ko - ji o - du - zi - maš grije - he svije -  
- ta da - ruj nam mir, da - ruj nam mir.